



**标配**  
Standard Configuration

- |              |                                |
|--------------|--------------------------------|
| • CURTIS 控制器 | Curtis Controller              |
| • AC立式驱动系统   | AC Drive System                |
| • 电磁制动       | Electromagnetic Brake          |
| • 实芯PU轮      | Solid PU Wheel                 |
| • EPS电转向     | Electric Power Steering System |
| • 弯道控制技术     | Curve Control Technology       |
| • 小时计        | Hour meter                     |
| • 起升电限位      | Electric Lift-limited          |
| • 智能充电机      | Intelligent Charger            |

**选配**  
Options

- |          |                       |
|----------|-----------------------|
| • 倒车蜂鸣器  | Reversing buzzer      |
| • 报警灯    | Alarm light           |
| • 进口电池   | Imported battery      |
| • 加大电池容量 | High capacity battery |
| • 侧拉式电池  | Side pull battery     |
| • 橡胶驱动轮  | Rubber Drive Wheel    |
| • 冷库型    | Cold storage use      |
| • 无人驾驶型  | AGV type              |
| • 锂电池    | Li-ion                |



**经销商**  
Agent / Distributor

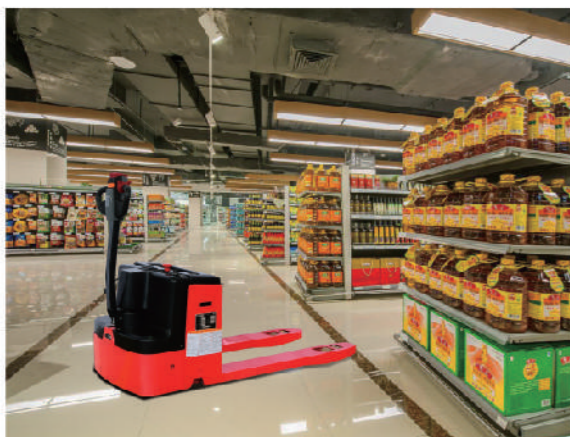
合肥搬易通科技发展有限公司  
BANYITONG SCIENCE & TECHNOLOGY DEVELOPING CO.,LTD.

官网/Web: www.mimachina.com  
电话/Tel: 4006-526-926  
地址/Add: 安徽省合肥市新站高新区岱河路与蔡伦路交叉口  
Address: Crossing of Daihe Road and Cailun Road,  
Xinzhan District, hefei, CHINA



MiMA官方二维码

**电动托盘搬运车**  
ELECTRIC PALLET TRUCK  
MEW15/20  
ME20/25/30/40  
MEB60



## 产品信息 PRODUCT INFORMATION

### MEW15/20

MEW15/20是一款容量为1500kg/2000kg的小型电动托盘搬运车,它兼具强劲的动力与韧性,可以满足许多苛刻条件的应用需求。它一般适用于超市等狭小空间。提供送货服务、库存补充或重型制造,可最大限度地降低您的总体拥有成本。

MEW 15/20 is a small electric pallet carrier with a capacity of 1500kg/2000kg. It has strong power and toughness, and can meet the application requirements of many harsh conditions. It is generally suitable for small spaces such as supermarkets. Providing delivery services, inventory replenishment or heavy manufacturing can minimize your overall cost of ownership.

### 外观/APPEARANCE

- 人机设计的操作舵柄,简洁美观,所有操作功能独立且易于实现;
- 流线型设计,紧凑美观,尺寸小巧,节省空间,可在很小通道内顺利同行;
- Man-machine design of the operation steering handle, concise and beautiful, all the operation functions are independent and easy to achieve;
- Streamlined design, compact and beautiful, compact size, saving space, can walk smoothly in a very small channel;

### 性能/PERFORMANCE

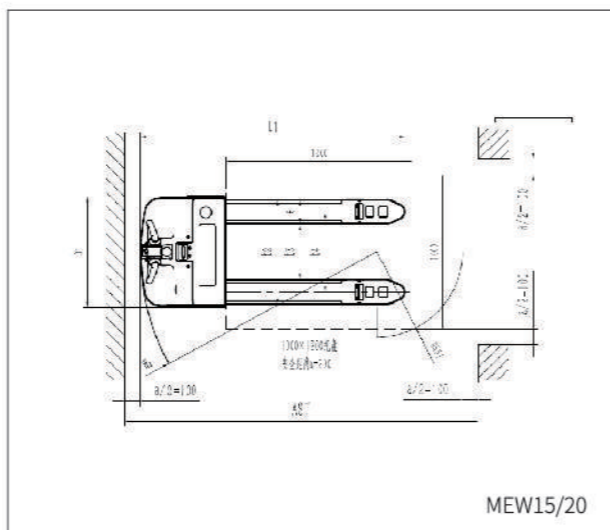
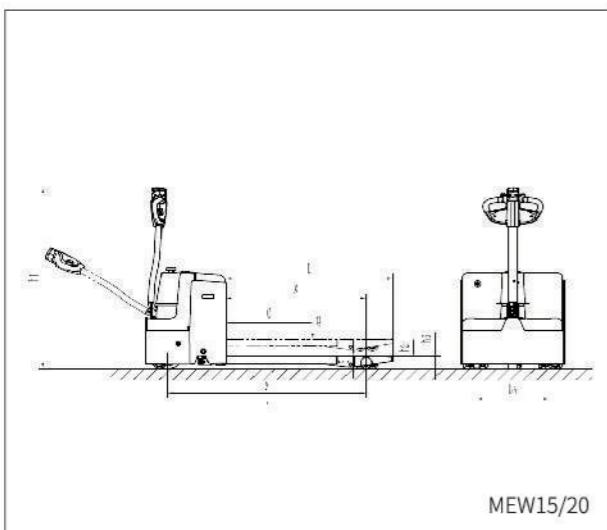
- 直流永磁驱动电机,动力强劲,性能卓越;
- 美国AMP防水防尘插件,给予线路可靠保护,大大降低了电器故障;
- 免维护电池,使用更省心,内置式充电器,充电更方便;
- DC permanent magnet drive motor, strong power, excellent performance;
- AMP waterproof and dust-proof plug-in in the United States provides reliable protection for the circuit and greatly reduces electrical failures.
- Maintenance-free batteries, more convenient to use, built-in charger, charging more convenient;

### 安全/SAFETY

- 电磁制动,刹车迅速、定位精准,保证了行车安全;
- 舵杆头上的紧急按钮可有效避免对司机的伤害;
- 坡道防滑,安全可靠
- Electromagnetic braking, braking fast, accurate positioning, to ensure the safety of driving;
- The emergency button on the rudder head can effectively avoid injury to the driver.
- Ramp slope protection, safe and reliable



## 载荷曲线图 LOAD CHART



## MiMA产品信息表 PRODUCT SPECIFICATION

### MEW15/20

标准/Standard					
1.1	制造厂商	Manufacture	MiMA	MiMA	
1.2	系列号	Model	MEW15	MEW20	
1.3	动力类型	Power	电动 electric	电动 electric	
1.4	驾驶方式	Operation Type	站板式 Stand on	站板式 Stand on	
1.5	额定载荷	Load Capacity	Q(kg)	1500	2000
1.6	载荷中心距	Load Center	C(mm)	600	600
1.7	前悬距,货叉,最低点	centre of support arm wheel to face of fork, fork lowered	x(mm)	969	969
1.8	轴距	Wheel Base	y(mm)	1291	1291
重量/weight					
2.1	整车重量(含电池)	Service weight(with battery)	kg	380	400
2.2	满载时的桥负荷,驱动侧/承重侧	Axle loading, laden drive/load	kg	700/1180	850/1550
2.3	空载时的桥负荷,驱动侧/承重侧	Axle loading, unladen drive/load	kg	295/85	310/90
轮胎/Tyre					
3.1	轮胎类型,驱动侧/承重侧	Tyre,operator/load side		聚氨酯PU	聚氨酯PU
3.2	轮胎尺寸,承重轮	Tyre size,load	(mm)	φ78×70	φ78×70
3.3	轮胎尺寸,驱动轮	Tyre size,drive	(mm)	φ210×70	φ210×70
3.4	稳定轮尺寸	Stable Wheel Size	(mm)	/	φ100×40
3.5	车轮数量 前/后(x=驱动轮)	Number of wheels front/rear (x=drive wheels)		4/1x	4/1x+2
3.6	轮距,驱动侧	Tread, drive	b4 (mm)	/	500
3.7	轮距,承重侧	Tread, load	b5 (mm)	530	530
尺寸/Dimensions					
4.1	起升高度	Lifting height	h2(mm)	115	115
4.2	作业时舵柄高度	Height of rudder handle during operation	h1(mm)	760/1244	760/1244
4.3	叉面最小离地高度	Fork height,lowered	h3(mm)	85	85
4.4	整车长度	Vehicle length	L1(mm)	1700	1700
4.5	整车宽度	Vehicle width	b1(mm)	730	730
4.6	货叉尺寸	Fork dimensions	l/e/s(mm)	1150/45/160	1150/45/160
4.7	货叉外侧距	Fork spread	b1(mm)	680	680
4.8	货叉离地间隙	Fork clearance	m2(mm)	40	40
4.9	直角堆垛通道宽度(托盘1000x1200) 载荷中心距 500	Aisle width,1000×1200 pallet, Load center 500	Ast(mm)	2338	2338
4.10	直角堆垛通道宽度(托盘800x1200) 载荷中心距 600	Aisle width,800×1200 pallet, Load center 600	Ast(mm)	2197	2197
4.11	转弯半径	Turning radius	Wa(mm)	1535	1535
性能/Function					
5.1	行驶速度,满/空载	Travel speed,with/without load	km/h	3.5/4	3.6/3.7
5.2	起升速度,满/空载	Lifting speed,with/without load	mm/s	39/46	39/46
5.3	下降速度,满/空载	Lowering speed,with/without load	mm/s	46/40	46/40
5.4	最大爬坡能力,满/空载(S2-5min)	Max climbing ability,with/without load(S2-5min)	%(tanθ)	3/10	3/10
5.5	制动方式	Service brake		电磁式 Electromagnetic type	电磁式 Electromagnetic type
驱动/Power					
6.1	驱动电机功率(S2-60min)	Drive motor rating(S2-60 min)	kw	0.75(DC)	0.75(DC)
6.2	起升电机功率,(S3-15%)	Lift motor rating(S3-15%)	kw	0.8(DC)	0.8(DC)
6.3	蓄电池,电压/额定容量	Battery voltage/rated capacity	V/Ah	24/80	24/100
6.4	电池重量	Battery weight	kg	50	70
6.5	转向系统	Steering System		机械式 Mechanical	机械式 Mechanical
其它/Other					
7.1	电池更换方式	Battery replaces		吊取式 Hanging	吊取式 Hanging

产品信息 PRODUCT INFORMATION



ME20/25/30/40

ME20/25/30/40是一款容量为2000kg-4000kg的平面点对点搬运的托盘搬运车,其圆弧形的身设计能大大缩小通道尺寸,且围板底部设计有专门的防夹脚设计,转弯半径小,广泛适用于物流、仓储、食品、纺织、印刷、冷链等行业,为客户提供中、重载货物水平搬运、中长距离

ME20/25/30/40 is a planar point-to-point pallet carrier with a capacity of 2000 kg-4000kg. Its circular body design can greatly reduce the size of the passage, and the bottom of the fender has a special anti-pinch design with small turning radius. It is widely used in logistics, warehousing, food, textile, printing, cold chain and other industries to provide customers with medium and heavy weight. Horizontal handling of cargo, medium and long distance

外观/APPEARANCE

- 车体特殊设计,越障能力强,通过性好
- 五支点结构,两侧辅助轮一体式减震,车身稳定性高,不易打滑;
- Special design of car body, high obstacle surmounting ability and good passing ability
- Five-fulcrum structure, one-in-one shock absorption of auxiliary wheels on both sides, high body stability, not easy to slip;

性能/PERFORMANCE

- 免维护大功率交流驱动系统,提供可靠驱动力;
- 站驾式独特的浮动悬挂系统,驱动轮始终和地面接触,确保驱动轮有良好的抓地力,不会打滑,同时保证了叉车的稳定性;
- AMP防水防尘插件,给予线路可靠保护,大大降低了电器故障;
- Maintenance-free high-power AC drive system to provide reliable driving power;
- The unique floating suspension system of the standing-driving type ensures that the driving wheels are always in contact with the ground to ensure good grip and non-skidding, as well as excellent stability of the forklift truck.
- AMP waterproof and dust-proof plug-in can provide reliable protection to the circuit and greatly reduce

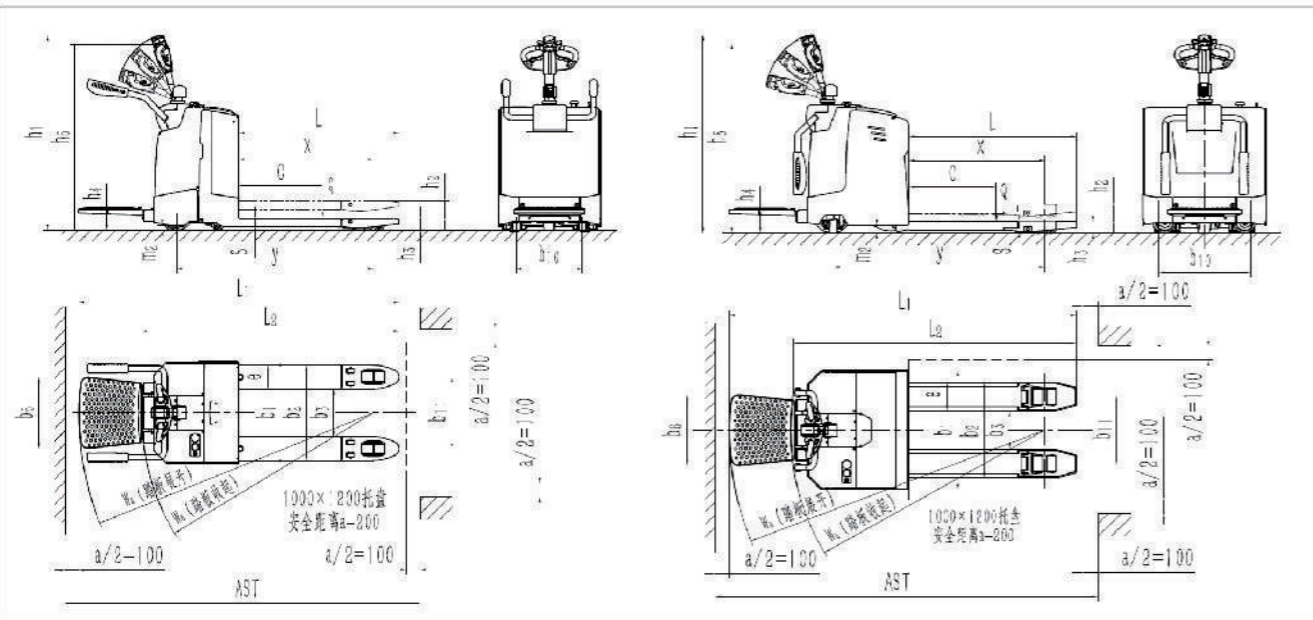
安全/SAFETY

- 采用人机工程学的减震站板、集成式操作手柄、纯电转向、折叠式护翼让整个托盘搬运车变得安全、舒适、省力,操作灵活;
- 具有转弯限速功能(曲线控制,与转弯角度成曲线关系);
- 紧急反向行驶功能,手柄头部的紧急反向按钮在向后行驶遇到紧急情况时,能有效避免驾驶员受到伤害;
- 电磁式制动,断电自动刹车,保证驻车时不会滑移溜车;
- Using ergonomics shock absorber board, integrated operation handle, pure electric steering, folding wing to let the whole
- The pallet carrier becomes safe, comfortable, labor-saving and flexible.
- It has the function of turning speed limit (curve control, curve relationship with turning angle);
- Emergency reverse driving function, the emergency reverse button of the handle head can effectively avoid the driver being injured when driving backward in an emergency situation.



ME20/25

ME30/40



ME20/25

ME30/40

MIMA产品信息表 PRODUCT SPECIFICATION

ME20/25/30/40

标准/Standard						
1.1	制造厂商	Manufacture		MIMA	MIMA	MIMA
1.2	系列号	Model		ME20	ME25	ME30
1.3	动力类型	Power		蓄电池Battery	蓄电池Battery	蓄电池Battery
1.4	驾驶方式	Operation Type		站板式Stand on	站板式Stand on	站板式Stand on
1.5	额定载荷	Load Capacity	Q(kg)	2000	2500	3000
1.6	载荷中心距	Load Center	C(mm)	600	600	600
1.7	承载距	Load Distance	x(mm)	865	865	985/910
1.8	轴距	Wheel Base	y(mm)	1345	1345	1515/1440
重量/weight						
2.1	整车重量(含电池)	Service weight(with battery)	kg	676	676	860
2.2	满载时的桥负荷,驱动侧/承重侧	Axle loading, laden drive/load	kg	920/1756	920/1756	1460/2400
2.3	空载时的桥负荷,驱动侧/承重侧	Axle loading, unladen drive/load	kg	547/129	547/129	700/160
轮胎/Tyre						
3.1	轮胎类型	Tyre type		聚氨酯PU	聚氨酯PU	聚氨酯PU
3.2	轮胎尺寸,承重轮	Tyre size,load	mm	$\Phi 80 \times 70$	$\Phi 80 \times 70$	$\Phi 80 \times 70$
3.3	轮胎尺寸,驱动轮	Tyre size,drive	mm	$\Phi 230 \times 75$	$\Phi 230 \times 75$	$\Phi 230 \times 75$
3.4	轮胎尺寸,辅助轮	Auxiliary wheel size	mm	$\Phi 125 \times 50$	$\Phi 125 \times 50$	$\Phi 150 \times 50$
3.5	车轮数量 承重轮/驱动轮(x=驱动轮)+辅助轮	Wheels number,load/drive(x=driven)+Auxiliary		4/1x+2	4/1x+2	4/1x+2
3.6	轮距,驱动侧	Tread, drive	b10(mm)	476	476	630
3.7	轮距,承重侧	Tread, load	b11(mm)	510	510	480
尺寸/Dimensions						
4.1	整车高度	Overall height	h1(mm)	1380	1380	1420
4.2	起升高度	Lift height	h2(mm)	120	120	110
4.3	叉面最小离地高度	Fork height,lowered	h3(mm)	85	85	85
4.4	站板高度	stand height	h4(mm)	155	155	180
4.5	手柄高度	Tiller Arm Height	h5(mm)	1080~1340	1080~1340	1090~1360
4.6	整车长度 踏板 收起/展开	Overall length,stand up/down	l1(mm)	1900/2310	1900/2310	1945/2390
4.7	整车宽度	Overall width	b1(mm)	730	730	850
4.8	货叉外侧距	Fork spread	b2(mm)	680	680	685
4.9	货叉尺寸	Fork dimensions	l/e/s(mm)	1150/170/56	1150/170/56	1150/175/75
4.10	车身离地间隙	Ground clearance,centre of wheelbase	m2(mm)	35	35	55
4.11	直角堆放通道宽度(托盘1000x1200) 1200跨货叉方向 踏板展开/收起	Aisle width,1000x1200 pallet,cross-wise,stand up/down	Ast(mm)	2500/2050	2500/2050	2150/2590
4.12	直角堆放通道宽度(托盘800x1200) 1200沿货叉方向 踏板展开/收起	Aisle width,800x1200 pallet,length-wise,stand up/down	Ast(mm)	2550/2100	2550/2100	2200/2640
4.13	转弯半径 踏板 展开/收起	Turning radius,stand up/down	Wa(mm)	2065/1730	2065/1730	1800/2220
性能/Function						
5.1	行驶速度,满/空载	Travel speed,with/without load	km/h	6/6	6/6	5/6
5.2	起升速度,满/空载	Lifting speed,with/without load	mm/s	40/55	40/55	29/33
5.3	下降速度,满/空载	Lowering speed,with/without load	mm/s	35/35	35/35	23/18
5.4	最大爬坡能力,满/空载(S2-5min)	Max.climbing ability,with/without load(S2-5min)	%(tan $\theta$ )	6/15	6/15	5/8
5.5	制动方式	Service brake		电磁式 Electromagnetic type	电磁式 Electromagnetic type	电磁式 Electromagnetic type
驱动/Power						
6.1	驱动电机功率(S2-60min)	Drive motor rating(S2-60 min)	kw	1.5(AC)	1.5(AC)	1.5(AC)
6.2	起升电机功率,(S3-15%)	Lift motor rating(S3-15%)	kw	2.2(DC)	2.2(DC)	2.2(DC)
6.3	蓄电池,电压/额定容量	Battery voltage/rated capacity	V/Ah	24/210	24/210	24/210
6.4	电池重量	Battery weight	kg	200	200	240
6.5	转向系统	Steering System		纯电转EPS	纯电转EPS	纯电转EPS
其它/Other						
7.1	电池更换方式	Battery replaces		吊取式 Hanging type	吊取式 Hanging type	吊取式 Hanging type



产品信息 PRODUCT INFORMATION

MEB60

MEB60系列叉车是一款平面托盘搬运车,最大承载能力6.0吨。适用于中长距离大吨位水平搬运,采用AC交流动力系统,大幅度降低维护成本,动力强劲;  
MEB60 series forklift truck is a flat pallet carrier with a maximum carrying capacity of 6.0 tons. It is suitable for medium-long distance and large tonnage horizontal transportation. AC power system is adopted to reduce maintenance cost greatly, and the power is strong.

外观/APPEARANCE

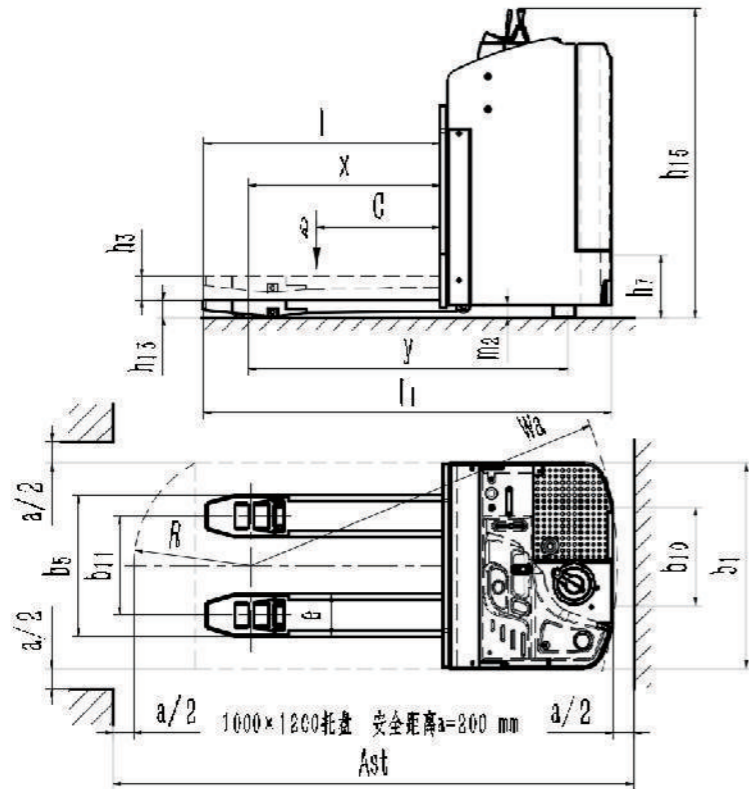
- 站驾式设计, 驾驶空间大, 操作更舒适
- Stand-driving design, large driving space, more comfortable operation

性能/PERFORMANCE

- 免维护大功率交流驱动系统, 提供可靠行驶动力
- 大容量电池, 续航能力强;
- 标配美国CURTIS控制器, 可靠、耐用;
- 美国AMP防水防尘插件, 给予线路可靠保护, 大大降低了电器故障;
- 智能充电机, 充电方便快捷, 能够很好的保护电池;
- Maintenance-free high-power AC drive system to provide reliable driving power
- Large capacity battery, strong endurance;
- Standardized CURTIS controller, reliable and durable;
- AMP waterproof and dust-proof plug-in in the United States provides reliable protection for the circuit and greatly reduces electrical failures.
- Intelligent charger, convenient and fast charging, can protect the battery very well;

安全/SAFETY

- 电磁式制动, 断电自动刹车, 保证驻车时不会滑移溜车;
- 操作手柄布局合理, 安全、省力, 操作灵活;
- Electromagnetic brake, automatic brake when power is cut off, to ensure that the car does not slip when parking.
- The operation handle is reasonable in layout, safe, labor-saving and flexible in operation.



MBE60

MIMA产品信息表 PRODUCT SPECIFICATION

标准/Standard			
1.1	制造厂商	Manufacture	MIMA
1.2	系列号	Model	MEB60
1.3	动力类型	Power	蓄电池Battery
1.4	驾驶方式	Operation Type	侧站式Stand on
1.5	额定载荷	Load Capacity	Q(kg) 6000
1.6	载荷中心距	Load Center	C(mm) 600
1.7	承载距 货叉 低位/高位	Axle centre to fork face fork raised/lowered	x(mm) 980/925
1.8	轴距 货叉 低位/高位	Wheelbase fork raised/lowered	y(mm) 1600/1545
重量/weight			
2.1	整车重量(含电池)	Service weight(with battery)	kg 1650
2.2	满载时的桥负荷, 驱动侧/承重侧	Axle loading, laden drive/load	kg 2640/5010
2.3	空载时的桥负荷, 驱动侧/承重侧	Axle loading, unladen drive/load	kg 1270/380
轮胎/Tyre			
3.1	轮胎类型, 驱动侧/承重侧	Tyre,operator/load side	聚氨酯PU
3.2	轮胎尺寸, 承重侧	Tyre size,load	mm Φ85×145
3.3	轮胎尺寸, 驱动侧	Tyre size,drive	mm Φ280×135
3.4	稳定轮尺寸	Auxiliary wheel size	mm Φ125×50
3.5	车轮数量前/后(x=驱动轮)	Wheels number,front/back(x=driven)	4/1X+2
3.6	轮距, 驱动侧	Tread, drive	b10(mm) 645
3.7	轮距, 承重侧	Tread, load	b11(mm) 480
尺寸/Dimensions			
4.1	整车高度	Overall height	h15 1540
4.2	起升高度	Lift height	h3(mm) 110
4.3	站板高度	stand height	h7(mm) 300
4.4	整车长度	sOverall length	l1(mm) 2030
4.5	整车宽度	Overall width	b1(mm) 1000
4.6	货叉尺寸	Fork dimensions	l/e/s(mm) 1200/235/86
4.7	货叉面最小离地高度	Fork height,lowered	h13(mm) 100
4.8	货叉外侧距	Fork spread	b5(mm) 715
4.9	车身离地间隙	Ground clearance,centre of wheelbase	m2(mm) 60
4.10	直角堆垛通道宽度(托盘1000×1200) 1200跨货叉方向	Aisle width,1000×1200 pallet,crosswise	Ast(mm) 2245
4.11	直角堆垛通道宽度(托盘800×1200) 1200沿货叉方向	Aisle width,800×1200 pallet,lengthwise	Ast(mm) 2330
4.12	转弯半径	Turning radius	Wa(mm) 1890
性能/Function			
5.1	行驶速度, 满/空载	Travel speed,with/without load	km/h 5/6
5.2	起升速度, 满/空载	Lifting speed,with/without load	mm/s 18/35
5.3	下降速度, 满/空载	Lowering speed,with/without load	mm/s 65/10
5.4	最大爬坡能力, 满/空载(S2-5min)	Max climbing ability,with/without load(S2-5min)	%(tanθ) 4/8
5.5	制动方式	Service brake	电磁式 Electromagnetic type
驱动/Power			
6.1	驱动电机功率(S2-60min)	Drive motor rating(S2-60 min)	kw 4 (AC)
6.2	起升电机功率, (S3-15%)	Lift motor rating(S3-15%)	kw 3.5 (DC)
6.3	蓄电池, 电压/额定容量	Battery voltage/rated capacity	V/Ah 24/420
6.4	电池重量	Battery weight	kg 335
6.5	转向系统	Steering System	电助力Electric assistance
其它/Other			
7.1	电池更换方式	Battery replaces	侧拉式Side pull type