



标配

Standard Configuration

- | | |
|--------------|-------------------------------|
| • CURTIS控制器 | Curtis Controller |
| • EPS电转向 | EPS |
| • AC驱动系统 | AC Drive System |
| • 机械盘式制动 | Disk Brake |
| • 实芯PU轮 | Solid Pu Wheel |
| • 侧拉式电池设计 | Side Pull Battery Design |
| • 门架缓冲系统 | Mast Buffering System |
| • 再生制动坡道辅助系统 | Ramp Auxiliary Braking System |
| • 智能充电机 | Intelligent Charger |
| • LED 前大灯 | LED Head Lamp |

选配

Options

- | | |
|------------|--------------------------------|
| • 驱动轮显 | Drive Wheel Position Display |
| • 多功能仪表 | Multi-functional Meter |
| • 实芯橡胶胎 | Solid Rubber Tyre |
| • 摄像头 | Camera |
| • 侧移器 | Side Shifter |
| • 串杆等各类属具 | Carpet Booms Etc Attachments |
| • 驶入式货架专用型 | Special Used For Drive-in Rack |
| • 冷库型 | Cold Storage Use |
| • 无人驾驶型 | AGV |

经销商

Agent / Distributor

合肥搬易通科技发展有限公司

BANYITONG SCIENCE & TECHNOLOGY DEVELOPING CO.,LTD.

官网/Web: www.mimachina.com

电话/Tel: 4006-526-926

地址/Add: 安徽省合肥市新站高新区岱河路与蔡伦路交叉口

Address: Crossing of Daihe Road and Cailun Road,

Xinzhan District, hefei, CHINA



MiMA官方二维码



www.mimachina.com

前移式叉车(站驾式)

ELECTRIC REACH TRUCK

(Stand on)

MF10/12/15/15D

MF20/25/30

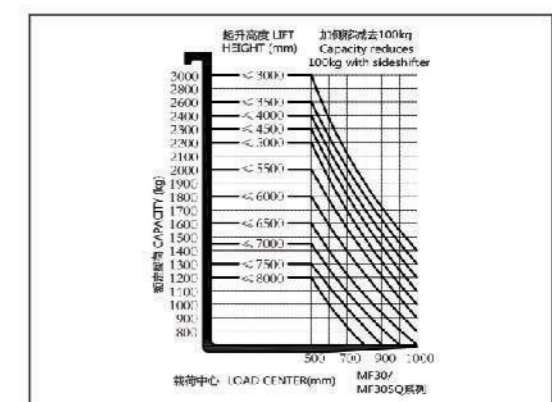
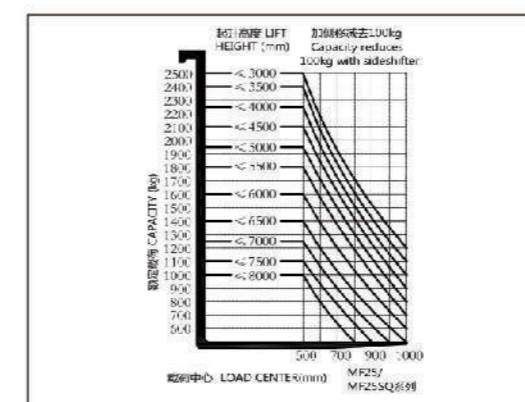
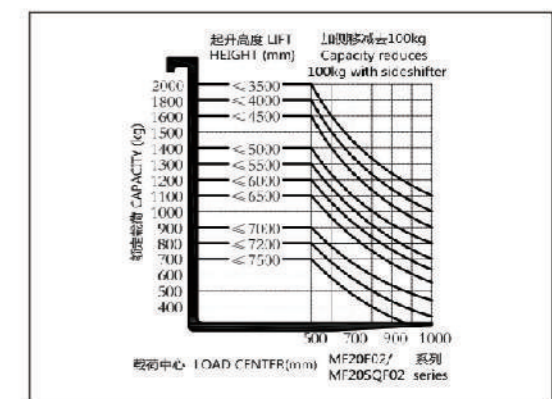
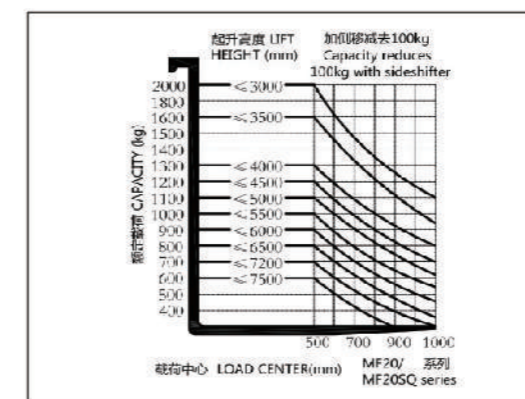
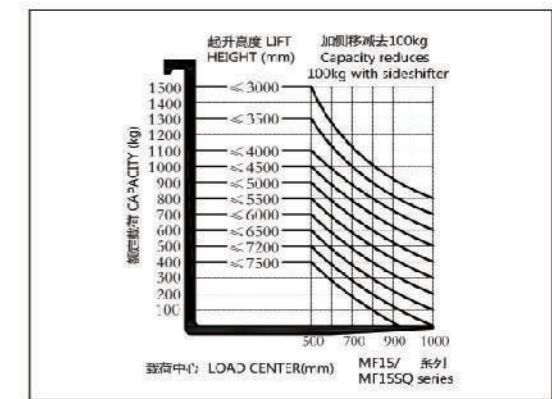
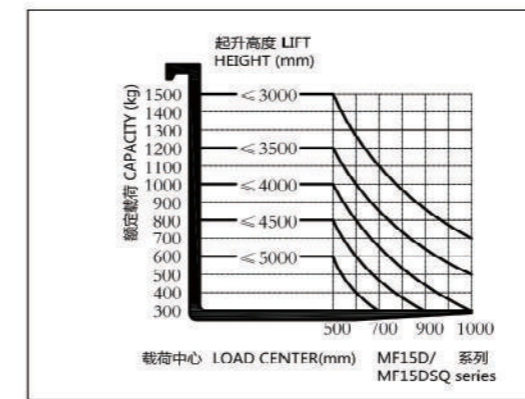
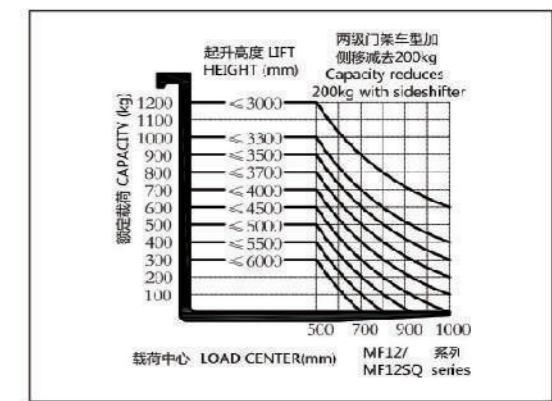
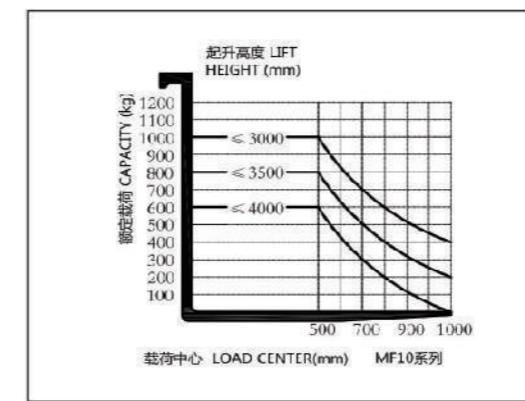
标准 Standard										
1.1	制造厂商	Manufacturers		MIMA	MIMA	MIMA	MIMA	MIMA	MIMA	
1.2	型号	Model		MF10	MF12	MF12SQ	MF15D	MF15DSQ	MF15	MF15SQ
1.3	动力类型	Power Type		蓄电池Battery	蓄电池Battery	蓄电池Battery	蓄电池Battery	蓄电池Battery	蓄电池Battery	蓄电池Battery
1.4	驾驶方式	Operation Type		站驾式Stand-on	站驾式Stand-on	站驾式Stand-on	站驾式Stand-on	站驾式Stand-on	站驾式Stand-on	站驾式Stand-on
1.5	额定载荷	Rated Capacity	Q(kg)	1000	1200	1200	1500	1500	1500	1500
1.6	载荷中心距	Load Center	C(mm)	500	500	500	500	500	500	500
1.7	前悬距	Front Overhang	x(mm)	130	140	140	140	140	180	180
1.8	轴距	Wheelbase	y(mm)	1170	1270	1270	1345	1345	1345	1345
重量 weight										
2.1	整车重量(含电池)	Service weight(incl. battery)	kg	1750	2000	2250	2100	2350	2450	2850
2.2	空载时的桥负荷, 驱动侧/承重侧	Bridge load at no load, drive side / load side	kg	1210/540	1440/560	1550/700	/	/	1625/825	1900/950
2.3	满载时桥负荷, 货叉前移, 驱动侧/承重侧	Bridge load at full load, fork moving forward, drive side / Load side	kg	430/2320	570/2630	580/2870	/	/	660/3290	600/3750
2.4	满载时桥负荷, 货叉收回, 驱动侧/承重侧	Bridge load at full load, fork retracted, drive side / load side	kg	1120/1630	1420/1780	1500/1950	/	/	1510/2440	1600/2750
轮胎 Tyre										
3.1	轮胎类型, 驱动侧/承重侧	Wheel type		聚氨酯PU	聚氨酯PU	聚氨酯PU	聚氨酯PU	聚氨酯PU	聚氨酯PU	聚氨酯PU
3.2	轮胎尺寸, 承重侧	Loading wheel	mm	Φ210×85	Φ210×85	Φ210×85	Φ210×85	Φ210×85	Φ254×104	Φ254×104
3.3	轮胎尺寸, 驱动侧	Driving wheel	mm	Φ230×110	Φ230×110	Φ230×110	Φ230×110	Φ230×110	Φ343×108	Φ343×108
3.4	稳定轮尺寸	Stable wheel size	mm	Φ180×76	Φ180×76	Φ180×76	Φ180×76	Φ180×76	Φ180×76	Φ180×76
3.5	车轮数量, 前/后(x=驱动轮)	Tyres, front/rear		2/1x+2	2/1x+2	2/1x+2	2/1x+2	2/1x+2	2/1x+2	2/1x+2
3.6	轮胎, 驱动侧	Tread, drive	b10(mm)	615	615	615	615	615	680	680
3.7	轮胎, 承重侧	Tread, load	b11(mm)	899	899	999	999	999	964	1064
尺寸 Dimensions										
4.1	货叉倾斜范围, 前/后	Tilt of fork, Forward/Backward	α/β(°)	/	3/5	3/5	3/5	3/5	3/5	3/5
4.2	门架闭合高度	Height of mast closed	h1(mm)	1980	2080	2080	2080	2080	2082	2142
4.3	自由起升高度	Full free lifting height	h2(mm)	/	/	1480	/	1480	400	1542
4.4	起升高度	Lifting height	h3(mm)	3000	3000	4500	3000	4500	3000	4500
4.5	起升时门架最大高度(含挡货架)	Height of mast open (incl. Load-Backrest)	h4(mm)	3925	3960	5455	3960	5455	3960	5460
4.6	护顶架高度	Overhead guard height	h6(mm)	2250	2250	2250	2250	2250	2250	2250
4.7	站板高度	Pedal height	h7(mm)	300	300	300	300	300	300	300
4.8	整车长度	Overall length	l1(mm)	1864	2059	2089	2070	2098	2259	2284
4.9	整车宽度	Overall Width	b1/b2(mm)	1000	1000	1084/1000	1084/1000	1084/1000	1090	1090/1170
4.10	货叉尺寸	Fork Dimensions	l/e/s(mm)	920/100/35	1070/100/35	1070/100/35	1070/100/35	1070/100/35	1070/100/35	1070/100/35
4.11	挡货架宽度	Width of Load-Backrest	b3(mm)	804	964	964	964	964	1088	1088
4.12	货叉外间距	Width across forks	b5(mm)	220-610	220-610	220-610	220-610	222-650	222-650	222-750
4.13	支腿内制间距	Inner spacing of the legs	b4(mm)	722	722	822	822	822	750	856
4.14	前移距离	Forward distance	l4(mm)	550	618	590	696	669	550	525
4.15	门架离地间隙	Mast clearance	m1(mm)	80	80	80	80	80	82	82
4.16	直角堆垛通道宽度(托盘1000x1200) 1200跨货叉方向	Aisle width for pallet 1000*1200 crossway	Ast(mm)	2428	2488	2507	2528	2545	2670	2688
4.17	直角堆垛通道宽度(托盘800x1200) 1200沿货叉方向	Aisle width for pallet 800*1200 crossway	Ast(mm)	2470	2518	2543	2540	2564	2718	2740
4.18	转弯半径	Turning radius	Wa(mm)	1394	1492	1492	1580	1580	1594	1594
性能 Function										
5.1	行驶速度, 满/空载	Driving speed(load/unload)	km/h	6/7	7/8	7/8	7/8	7/8	9/10	9/10
5.2	起升速度, 满/空载	Lifting speed(load/unload)	mm/s	110/160	150/190	130/190	150/190	100/190	240/400	200/350
5.3	下降速度, 满/空载	Lowering speed(load/unload)	mm/s	210/190	190/170	170/130	190/170	170/130	300/270	320/280
5.4	最大爬坡能力, 满/空载(S2-5min)	Max. climbing ability	%(tanθ)	≤8/≤10	≤10	≤10	≤8/≤10	≤8/≤10	≤10	≤10
5.5	制动方式	Brake type		机械式Mechanical	机械式Mechanical	机械式Mechanical	机械式Mechanical	机械式Mechanical	机械式Mechanical	机械式Mechanical
驱动 Power										
6.1	驱动电机功率(S2-60min)	Driving motor	kw	1.5	2.3	2.3	2.3	2.3	4.5	4.5
6.2	起升电机功率(S3-15%)	Lifting motor	kw	2	3.5	3.5	3.5	3.5	7.5	7.5
6.3	蓄电池, 电压/额定容量	Battery Voltage/capcity	V/Ah	24/280	24/350	24/420	24/420	24/420	48/300	48/300
6.4	电池重量	Battery weight	kg	260	300	335	335	335	500	500
6.5	转向系统	Steering system		电转向EPS	电转向EPS	电转向EPS	电转向EPS	电转向EPS	电转向EPS	电转向EPS
其它 Other										
7.1	Battery Change Type			侧拉式slide change	侧拉式slide change	侧拉式slide change	侧拉式slide change	侧拉式slide change	侧拉式slide change	侧拉式slide change

标准 Standard									
1.1	制造厂商	Manufacturers		MIMA	MIMA	MIMA	MIMA	MIMA	MIMA
1.2	型号	Model		MF20	MF20SQ	MF25	MF25SQ	MF30	MF30SQ
1.3	动力类型	Power Type		蓄电池Battery	蓄电池Battery	蓄电池Battery	蓄电池Battery	蓄电池Battery	蓄电池Battery
1.4	驾驶方式	Operation Type		站驾式Stand-on	站驾式Stand-on	站驾式Stand-on	站驾式Stand-on	站驾式Stand-on	站驾式Stand-on
1.5	额定载荷	Rated Capacity	Q(kg)	2000	2000	2500	2500	3000	3000
1.6	载荷中心距	Load Center	C(mm)	500	500	500	500	500	500
1.7	前悬距	Front Overhang	x(mm)	180	180	183.5	181	183.5	181
1.8	轴距	Wheelbase	y(mm)	1545	1545	1720	1720	1920	1920
重量 weight									
2.1	整车重量(含电池)	Service weight(incl. battery)	kg	2750	2950	3300	3580	3400	3680
2.2	空载时的桥负荷, 驱动侧/承重侧	Bridge load at no load, drive side / load side	kg	/	/	/	/	/	/
2.3	满载时桥负荷, 货叉前移, 驱动侧/承重侧	Bridge load at full load, fork moving forward, drive side / Load side	kg	/	/	/	/	/	/
2.4	满载时桥负荷, 货叉收回, 驱动侧/承重侧	Bridge load at full load, fork retracted, drive side / load side	kg	/	/	/	/	/	/
轮胎 Tyre									
3.1	轮胎类型, 驱动侧/承重侧	Wheel type		聚氨酯PU	聚氨酯PU	聚氨酯PU	聚氨酯PU	聚氨酯PU	聚氨酯PU
3.2	轮胎尺寸, 承重侧	Loading wheel	mm	Φ254×104	Φ254×104	Φ267×135	Φ267×135	Φ267×135	Φ267×135
3.3	轮胎尺寸, 驱动侧	Driving wheel	mm	Φ343×108	Φ343×108	Φ380×165	Φ380×165	Φ380×165	Φ380×165
3.4	稳定轮尺寸	Stable wheel size	mm	Φ180×76	Φ180×76	Φ204×76	Φ204×76	Φ204×76	Φ204×76
3.5	车轮数量, 前/后(x=驱动轮)	Tyres, front/rear		2/1x+2	2/1x+2	2/1x+2	2/1x+2	2/1x+2	2/1x+2
3.6	轮胎, 驱动侧	Tread, drive	b10(mm)	680	680	726	726	726	726
3.7	轮胎, 承重侧	Tread, load	b11(mm)	1064	1064	1135	1135	1135	1135
尺寸 Dimensions									
4.1	货叉倾斜范围, 前/后	Tilt of fork, Forward/Backward	α/β(°)	3/5	3/5	3/5	2/6	3/5	2/6
4.2	门架闭合高度	Height of mast closed	h1(mm)	2082	2142	2082	2292	2082	2292
4.3	自由起升高度	Full free lifting height	h2(mm)	80	1542	80	1550	80	1550
4.4	起升高度	Lifting height	h3(mm)	3000	4500	3000	4500	3000	4500
4.5	起升时门架最大高度(含挡货架)	Height of mast open (incl. Load-Backrest)	h4(mm)	3960	5460	3960	5460	4050	5550
4.6	护顶架高度	Overhead guard height	h6(mm)	2250	2250	2300	2300	2300	2300
4.7	站板高度	Pedal height	h7(mm)	300	300	350	350	350	350
4.8	整车长度	Overall length	l1(mm)	2293	2330	2387	2436	2487	2536
4.9	整车宽度	Overall Width	b1/b2(mm)	1090/1170	1090/1170	1190/1270	1190/1270	1190/1270	1190/1270
4.10	货叉尺寸	Fork Dimensions	l/e/s(mm)	1070/100/40	1070/100/40	1070/100/45	1070/100/45	1070/125/45	1070/125/45
4.11	挡货架宽度	Width of Load-Backrest	b3(mm)	1088	1088	1088	1088	1148	1148
4.12	货叉外间距	Width across forks	b5(mm)	222-750	222-750	222-750	222-750	250-750	250-750
4.13	支腿内制间距	Inner spacing of the legs	b4(mm)	856	856	892	892	892	892
4.14	前移距离	Forward distance	l4(mm)	717	677	825	775	925	875
4.15	门架离地间隙	Mast clearance	m1(mm)	82	82	82	82	82	82
4.16	直角堆垛通道宽度(托盘1000x1200) 1200跨货叉方向	Aisle width for pallet 1000*1200 crossway	Ast(mm)	2750	2773	2894	2919	3045	3066
4.17	直角堆垛通道宽度(托盘800x1200) 1200沿货叉方向	Aisle width for pallet 800*1200 crossway	Ast(mm)	2762	2793	2883	2921	3003	3039
4.18	转弯半径	Turning radius	Wa(mm)	1784	1784	1995	1995	2192	2192
性能 Function									
5.1	行驶速度, 满/空载	Driving speed(load/unload)	km/h	9/10	9/10	9/10	9/10	8/10	8/10
5.2	起升速度, 满/空载	Lifting speed(load/unload)	mm/s	220/380	180/330	240/320	220/300	220/320	200/300
5.3	下降速度, 满/空载	Lowering speed(load/unload)	mm/s	310/260	290/240	340/290	310/260	340/290	310/260
5.4	最大爬坡能力, 满/空载(S2-5min)	Max. climbing ability	%(tanθ)	≤10	≤10	≤10	≤10	≤10	≤10
5.5	制动方式	Brake type		机械式Mechanical	机械式Mechanical	机械式Mechanical	机械式Mechanical	机械式Mechanical	机械式Mechanical
驱动 Power									
6.1	驱动电机功率(S2-60min)	Driving motor	kw	4.5	4.5	5.5	5.5	5.5	5.5
6.2	起升电机功率(S3-15%)	Lifting motor	kw	7.5	7.5	8.6	8.6	8.6	8.6
6.3	蓄电池, 电压/额定容量	Battery Voltage/capcity	V/Ah	48/300	48/300	48/400	48/400	48/400	48/400
6.4	电池重量	Battery weight	kg	500	500	650	650	650	650
6.5	转向系统	Steering system		电转向EPS	电转向EPS	电转向EPS	电转向EPS	电转向EPS	电转向EPS
其它 Other									
7.1	Battery Change Type			侧拉式slide change	侧拉式slide change	侧拉式slide change	侧拉式slide change	侧拉式slide change	侧拉式slide change

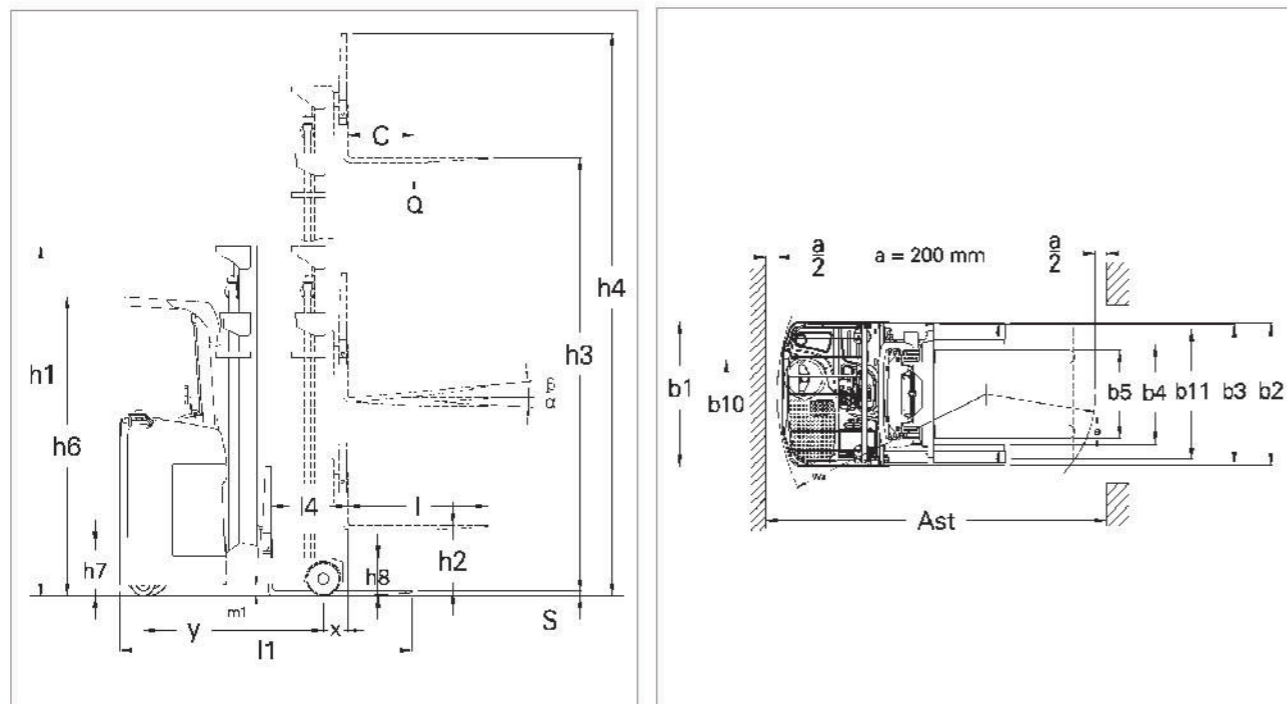
门架资料 MAST SPECIFICATION

两节门架 Duplex Mast		MF10				MF12			
型号 Model	MF	10-30	10-35	10-40	12-30	12-35	12-40	12-45	
提升高度 Lift height	h3(mm)	3000	3500	4000	3000	3500	4000	4500	
起升时门架最大高度(含挡货架) Height-Mast Extended w/ Load-Backrest	h4(mm)	3925	4425	4925	3960	4460	4960	5460	
闭合门架高度 Height---Mast Lowered	h1(mm)	1980	2230	2480	2080	2330	2630	2880	
三节全自由门架 Triplex full free Mast		MF12							
型号 Model	MF	12SQ-45	12SQ-50	12SQ-55	12SQ-60				
提升高度 Lift height	h3(mm)	4500	5000	5500	6000				
起升时门架最大高度(含挡货架) Height-Mast Extended w/ Load-Backrest	h4(mm)	5455	5955	6455	6955				
闭合门架高度 Height---Mast Lowered	h1(mm)	2080	2247	2413	2580				
自由起升高度 Height--Free Lift	h2(mm)	1480	1647	1813	1980				
两节门架 Duplex Mast		MF15				MF15D			
型号 Model	MF	15-30	15-35	15-40	15-45	15D-30	15D-35	15D-40	15D-45
提升高度 Lift height	h3(mm)	3000	3500	4000	4500	3000	3500	4000	4500
起升时门架最大高度(含挡货架) Height-Mast Extended w/ Load-Backrest	h4(mm)	3960	4460	4960	5460	3960	4460	4960	5460
闭合门架高度 Height---Mast Lowered	h1(mm)	2082	2332	2632	2882	2080	2330	2630	2880
自由起升高度 Height--Free Lift	h2(mm)	400	400	400	400	0	0	0	0
三节全自由门架 Triplex full free Mast		MF15D							
型号 Model	MF	15DSQ-45	15DSQ-50						
提升高度 Lift height	h3(mm)	4500	5000						
起升时门架最大高度(含挡货架) Height-Mast Extended w/ Load-Backrest	h4(mm)	5455	5955						
闭合门架高度 Height---Mast Lowered	h1(mm)	2080	2247						
自由起升高度 Height--Free Lift	h2(mm)	1480	1647						
三节全自由门架 Triplex full free Mast		MF15							
型号 Model	MF	15SQ-45	15SQ-50	15SQ-55	15SQ-60	15SQ-65	15SQ-70	15SQ-75	
提升高度 Lift height	h3(mm)	4500	5000	5500	6000	6500	7000	7500	
起升时门架最大高度(含挡货架) Height-Mast Extended w/ Load-Backrest	h4(mm)	5460	5960	6460	6960	7460	7960	8460	
闭合门架高度 Height---Mast Lowered	h1(mm)	2142	2309	2475	2642	2809	2975	3142	
自由起升高度 Height--Free Lift	h2(mm)	1542	1709	1875	2042	2209	2375	2542	
两节门架 Duplex Mast		MF20				MF25			
型号 Model	MF	20-30	20-35	20-40	20-45	25-30	25-35	25-40	25-45
提升高度 Lift height	h3(mm)	3000	3500	4000	4500	3000	3500	4000	4500
起升时门架最大高度(含挡货架) Height-Mast Extended w/ Load-Backrest	h4(mm)	3960	4460	4960	5460	3960	4460	4960	5460
闭合门架高度 Height---Mast Lowered	h1(mm)	2082	2332	2632	2882	2082	2332	2632	2882
自由起升高度 Height--Free Lift	h2(mm)	80	80	80	80	80	80	80	80
三节全自由门架 Triplex full free Mast		MF20							
型号 Model	MF	20SQ-45	20SQ-50	20SQ-55	20SQ-60	20SQ-65	20SQ-70	20SQ-75	
提升高度 Lift height	h3(mm)	4500	5000	5500	6000	6500	7000	7500	
起升时门架最大高度(含挡货架) Height-Mast Extended w/ Load-Backrest	h4(mm)	5460	5960	6460	6960	7460	7960	8460	
闭合门架高度 Height---Mast Lowered	h1(mm)	2142	2309	2475	2642	2809	2975	3142	
自由起升高度 Height--Free Lift	h2(mm)	1542	1709	1875	2042	2209	2375	2542	
三节全自由门架 Triplex full free Mast		MF25							
型号 Model	MF	25SQ-45	25SQ-50	25SQ-55	25SQ-60	25SQ-65	25SQ-70	25SQ-75	25SQ-80
提升高度 Lift height	h3(mm)	4500	5000	5500	6000	6500	7000	7500	8000
起升时门架最大高度(含挡货架) Height-Mast Extended w/ Load-Backrest	h4(mm)	5460	5960	6460	6960	7460	7960	8460	8960
闭合门架高度 Height---Mast Lowered	h1(mm)	2292	2459	2625	2792	2959	3125	3292	3559
自由起升高度 Height--Free Lift	h2(mm)	1550	1716	1884	2050	2216	2384	2550	2816
两节门架 Duplex Mast		MF30							
型号 Model	MF	30-30	30-35	30-40	30-45				
提升高度 Lift height	h3(mm)	3000	3500	4000	4500				
起升时门架最大高度(含挡货架) Height-Mast Extended w/ Load-Backrest	h4(mm)	4050	4550	5050	5550				
闭合门架高度 Height---Mast Lowered	h1(mm)	2082	2332	2632	2882				
自由起升高度 Height--Free Lift	h2(mm)	80	80	80	80				
三节全自由门架 Triplex full free Mast		MF30							
型号 Model	MF	30SQ-45	30SQ-50	30SQ-55	30SQ-60	30SQ-65	30SQ-70	30SQ-75	30SQ-80
提升高度 Lift height	h3(mm)	4500	5000	5500	6000	6500	7000	7500	8000
起升时门架最大高度(含挡货架) Height-Mast Extended w/ Load-Backrest	h4(mm)	5550	6050	6550	7050	7550	8050	8550	9050
闭合门架高度 Height---Mast Lowered	h1(mm)	2292	2459	2625	2792	2959	3125	3292	3559
自由起升高度 Height--Free Lift	h2(mm)	1550	1716	1884	2050	2216	2384	2550	2816

载荷曲线图 LOAD CHART



产品尺寸 Product size



产品简述 PRODUCT DESCRIPTION

- MF系列前移式叉车, 承载能力1.0T-3.0T, 门架整体前移及收回, 车身结构紧凑, 通道尺寸小, 转弯灵活。
MF series forward forklift truck, bearing capacity is 1.0T-3.0T, the portal frame is moved forward and retracted as a whole, the body structure is compact, the channel size is small, and the turning is flexible.
- 中载货物水平搬运及堆垛;
Horizontal handling and stacking of medium cargo;
- 中长距离搬运及堆垛;
Handling and stacking for medium and long distances;
- 高性能门架, 适用于各类中高位货架仓库, 满足各种高效率存储工况需求。
High-performance portal frame, suitable for all kinds of high and medium shelf warehouses, to meet the needs of various high-efficiency storage conditions.



单面托盘
Single-deck Pallet

双面托盘
Double-deck Pallet

- 适用于单/双面托盘作业, 配备锻造货叉。
For single-deck/double-deck pallet with forging fork.



前移式叉车 (MF系列)

ELECTRIC REACH TRUCK (MF Series)

MIMA 米玛®



MF10

MF12

MF15D

MF15

MF20

MF25/30

产品特点 PRODUCT FEATURES

- 免维护大功率交流驱动系统, 提供可靠行驶动力;
Maintenance-free and high power AC drive system provide reliable driving power;
- 标配CURTIS系列控制器, 可靠、耐用; AMP防水防尘插件, 给予线路可靠保护, 大大降低了电器故障;
CURTIS controller is reliable and durable; AMP waterproof and dustproof plug which gives reliable protection to the line and greatly reduces electrical faults;
- 站驾式操作, 纯电转向, 操作轻便安全。
Station-driving operation, pure electric steering, easy and safe operation.
- 全新设计的悬挂系统, 使得转向操作更加灵活方便;
The newly designed suspension system makes the steering operation more flexible and convenient
- 采用4支点低重心设计, 车架为高强度钢板框架结构, 具备较大的剩余承载能力, 使用寿命长。
It adopts 4 points and low gravity center design and the frame is high-strength steel structure. It has residual load capacity and long service life.

产品亮点 PRODUCT ADVANTAGES

堆垛通道
2450mm

● 机械盘式制动
Mechanical disc brake

● 侧拉电池设计, 电池更换方便快捷
Side pull battery design, Battery replacement is convenient and fast

● 蓝光警示灯、报警灯
等各类选装配置
Blue light warning lamp, alarm lamp
All kinds of optional assemblies

● 转弯半径小, 转向灵活
直角堆垛通道最小可至2450mm
(1000×1200 (C500) 托盘)
Small turning radius and flexible turning
The minimum right-angle stacking passage is 2450 mm. (1000 x 1200 (C500) pallet)

● 铅酸电池/锂电池
多种电池规格配置
Lead-acid batteries and lithium batteries
Multiple Battery Specification Configuration

● 各类定制方案
Various customization schemes