

产品信息 PRODUCT INFORMATION



- 站驾踏板采用减震设计, 使站乘舒适性大大提高, 减轻长时间驾驶疲劳;
- 采用集成式操纵手柄, 简洁美观, 所有操作功能均可单手轻松完成;
- 采用5支点低重心设计, 车架为高强度钢板框架结构, 具备较大的冗余承载能力, 使用寿命长;
- 全系采用进口防水接插件, 所有电线电缆均有可靠的保护, 大大提高了电气系统的可靠性;

- Station driving pedal adopts shock absorption design, which greatly improves station riding comfort and reduces long driving fatigue.
- The integrated control handle is simple and beautiful, and all operation functions can be easily completed by one hand.
- The frame is a high strength steel frame structure with 5 fulcrums and low center of gravity. It has a large redundant bearing capacity. Long service life;
- The whole system adopts imported waterproof connectors, all wires and cables have reliable protection, greatly improving the electrical system. Reliability;

MB15/20 站板式托盘堆垛车

MB15/20是一款额定载重为1500kg/2000kg的站板式托盘堆垛车, 主要适用于平坦的地面作业, 或者楼层和集装箱内作业。MB15/20 is a platen pallet stacker with a rated load of 1500kg/2000kg. It is mainly suitable for flat ground operation or floor and container operation.

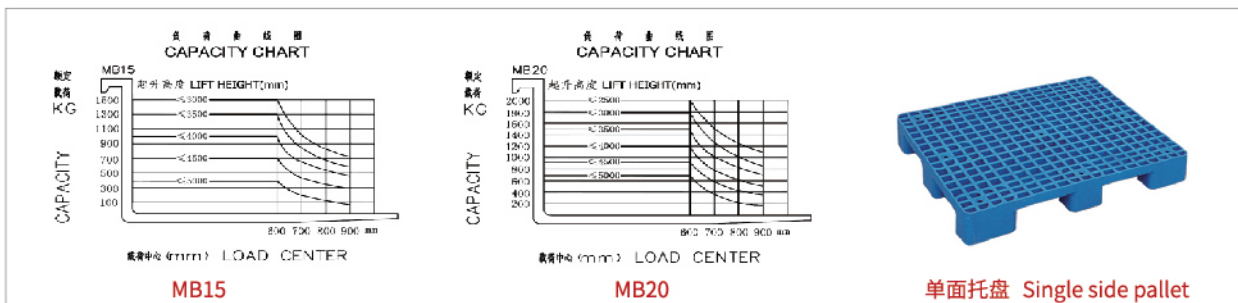
产品优势/PRODUCT ADVANTAGE

- 站驾式电转向, 使得操控更轻便灵活;
- 最新的CURTIS交流控制系统, 控制精确平稳, 效率更高;
- Station-driven steering makes the control more convenient and flexible.
- The latest CURTIS AC control system is accurate, stable and efficient.

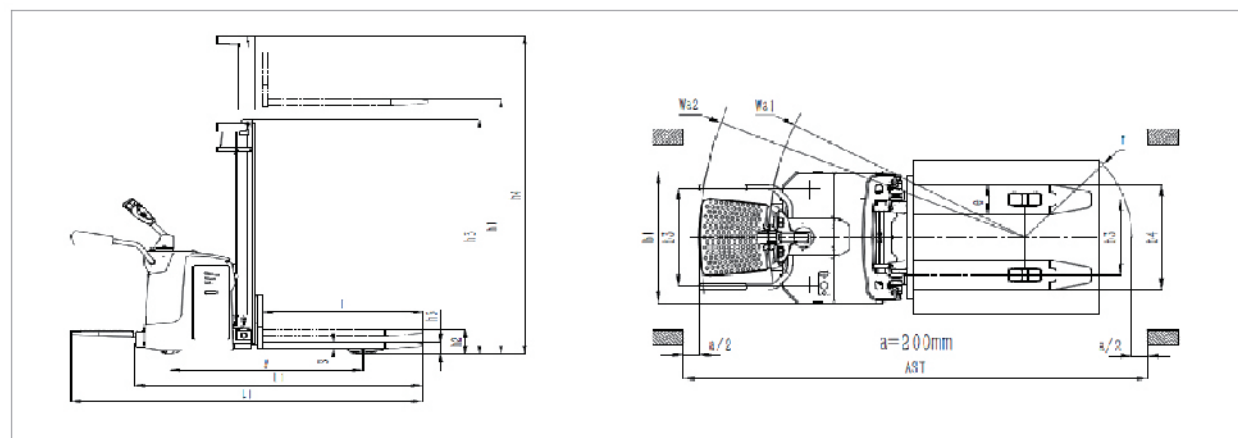
- 具有释放制动、反向制动以及紧急制动三种制动功能, 确保行车的安全;
- 站驾式护栏一体成型, 能更好的保护操作者;
- 站驾式标配车速随转向角度增加自动降低的功能;
- 具有下降缓冲功能, 有效保护货物安全。

- It has three braking functions: release brake, reverse brake and emergency brake to ensure the safety of driving.
- The stand-and-ride guardrail is formed in one body, which can better protect operators.
- Station-driven standard vehicle speed automatically reduces with the increase of steering angle.
- It has the function of reducing buffer and effectively protects the safety of goods.

载荷曲线图 LOAD CHART



产品尺寸 Product size



MIMA产品信息表 PRODUCT SPECIFICATION

1.1	制造厂商	Manufacture	MiMa	MiMa	MiMa	MiMa	MiMa	MiMa
1.2	系列号	Model	MB1530F01	MB2030F01	MB1530	MB2030	MB1545S	MB2045S
1.3	动力类型	Power	蓄电池	蓄电池	蓄电池Battery	蓄电池Battery	蓄电池Battery	蓄电池Battery
1.4	驾驶方式	Operation Type	站驾式	站驾式	站驾式Stand up	站驾式Stand up	站驾式Stand up	站驾式Stand up
1.5	额定载荷	Load Capacity	Q(kg)	1500	2000	1500	2000	1500
1.6	载荷中心距	Load Center	C(mm)	600	600	600	600	600
1.7	前悬距	Axle centre to fork face	x(mm)	413	413	428	428	428
1.8	轴距	Wheel Base	y(mm)	1390	1390	1390	1390	1390
重量/weight								
2.1	整车重量(含电池)	Service weight(with battery)		1100	1115	1270	1300	1450
2.2	空载时的桥负荷, 驱动侧/承重侧	Axle loading, unladen drive/load		795/305	807/308	926/344	947/353	1057/393
2.3	满载时的桥负荷, 驱动侧/承重侧	Axle loading, laden drive/load		1052/1548	1149/1966	1166/1604	1266/2034	1297/1653
轮胎/Tyre								
3.1	轮胎类型, 驱动侧/承重侧	Wheel type		聚氨酯PU	聚氨酯PU	聚氨酯PU	聚氨酯PU	聚氨酯PU
3.2	轮胎尺寸, 承重轮	Tyre size, load	mm	Φ80×70	Φ80×70	Φ80×70	Φ80×70	Φ80×70
3.3	轮胎尺寸, 驱动轮	Tyre size, drive	mm	Φ230×75	Φ230×75	Φ230×75	Φ230×75	Φ230×75
3.4	稳定轮尺寸	Steady wheel	mm	Φ125×50	Φ125×50	Φ125×50	Φ125×50	Φ125×50
3.5	车轮数量, 前后(x=驱动轮)	Wheels number, front/back(x=driven)		2/1x+2	2/1x+2	2/1x+2	2/1x+2	2/1x+2
3.6	轮距, 驱动侧	Tread, drive	b10(mm)	630	630	630	630	630
3.7	轮距, 承重侧	Tread, load	b11(mm)	490	490	490	490	490
尺寸/Dimensions								
4.1	门架闭合高度	Height of mast, lowered	h1(mm)	2025	2025	2025	2025	2121
4.2	自由起升高度	Free lift	h2(mm)	/	/	60	60	/
4.3	起升高度	Lift height	h3(mm)	3000	3000	3000	3000	4500
4.4	起升时门架最大高度	Height of mast, extended	h4(mm)	3506	3506	3490	3490	5097
4.5	手柄高度 最小/最大	Minimum/Maximum Handle Height	h14(mm)	1100/1390 ^[1]	1100/1390 ^[1]	1100/1390 ^[1]	1100/1390 ^[1]	1100/1390 ^[1]
4.6	货叉面最小离地高度	Min. height of fork	h13(mm)	90	90	90	90	90
4.7	整车长度	Overall length	l1(mm)	2518/2145 ^[2]	2518/2145 ^[2]	2533/2160 ^[2]	2533/2160 ^[2]	2533/2160 ^[2]
4.8	整车宽度	Overall width	b1(mm)	850	850	850	850	850
4.9	货叉尺寸	Fork dimensions	l/e/s(mm)	1150/190/56	1150/190/56	1150/190/56	1150/190/56	1150/190/56
4.10	货叉外侧距	Forks outside width	b5(mm)	680	680	680	680	680
4.11	最小离地间隙	Minimum ground clearance	m1(mm)	30	30	30	30	30
4.12	护顶架高度	Overhead guard height	h6(mm)	/	/	/	/	/
4.13	通道宽度(1000×1200托盘) 载荷中心C500mm踏板展开/收起	Aisle width for pallet 1000*1200 crossway	Ast(mm)	2956/2610	2956/2610	2962/2616	2962/2616	2962/2616
4.14	直角堆垛通道宽度(托盘800x1200) 载荷中心C600mm	Aisle width for pallet 800*1000 crossway	Ast(mm)	2913/2567	2913/2567	2924/2578	2924/2578	2924/2578
4.15	转弯半径	Turning radius	Wa(mm)	2101/1755 ^[3]	2101/1755 ^[3]	2101/1755 ^[3]	2101/1755 ^[3]	2101/1755 ^[3]
性能/Function								
5.1	行驶速度, 满/空载	Travel speed, with/without load	km/h	5.0/6.0	5.0/6.0	5.0/6.0	5.0/6.0	5.0/6.0
5.2	起升速度, 满/空载	Lifting speed, with/without load	mm/s	90/130	65/115	125/175	65/100	90/130
5.3	下降速度, 满/空载	Lowering speed, with/without load	mm/s	110/130	85/115	115/135	95/100	95/100
5.4	最大爬坡能力, 满/空载(S2-5min)	Max. climbing ability, with/without load(S2-5min)	%(tanθ)	≤8/≤10	≤6/≤8	≤8/≤10	≤6/≤8	≤8/≤10
5.5	制动方式	Service brake		电磁式 Electromagnetic type	电磁式 Electromagnetic type	电磁式 Electromagnetic type	电磁式 Electromagnetic type	电磁式 Electromagnetic type
驱动/Power								
6.1	驱动电机功率(S2-60 min)	Drive motor rating(S2-60 min)	kw	1.5	1.5	1.5	1.5	1.5
6.2	起升电机功率, (S3-15%)	Lift motor rating(S3-15%)	kw	2	2	2	2	3
6.3	蓄电池, 电压/额定容量	Battery voltage/rated capacity	V/Ah	24/210	24/210	24/210	24/210	24/280
6.4	电池重量	Battery weight	kg	200	200	200	200	230
6.5	转向系统	Steering System		电子转向EPS ^[4]	电子转向EPS ^[4]	电子转向EPS ^[4]	电子转向EPS ^[4]	电子转向EPS ^[4]
其它/Other								
7.1	电池类型	Battery Type		侧拉式 Side pull type	侧拉式 Side pull type	侧拉式 Side pull type	侧拉式 Side pull type	侧拉式 Side pull type
7.2	门架系列	Mast type		单缸双门架	单缸双门架	双缸双门架	双缸双门架	双缸三级门架

[1] 机械转向车辆, 手柄最低/最高高度分别为1470mm和1100mm。
[2] 不含缓冲垫, 整车长度比标准长度少70mm, 转弯半径减少70mm, 电子转向车辆标准配置。
[3] 可选配机械转向(109系列), 机械转向标配ZAP控制器, 不带护翼。

Note [1] For mechanical steering vehicle, the minimum and maximum handle height are 1470 mm and 1100 mm, respectively.
[2] Without wing protection, the length of the vehicle is 70 mm less than that of the standard vehicle, and the turning radius is 70 mm less. Electronic steering vehicle with standard wing guard.
[3] Optional mechanical steering (109 series), mechanical steering standard ZAP controller, without wings.